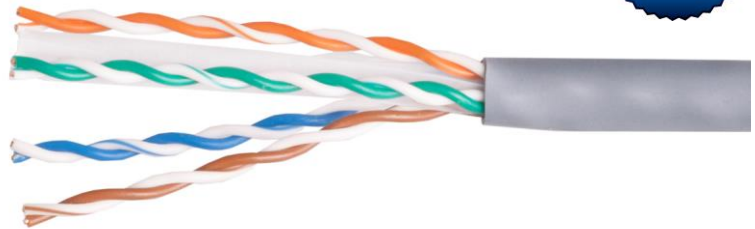


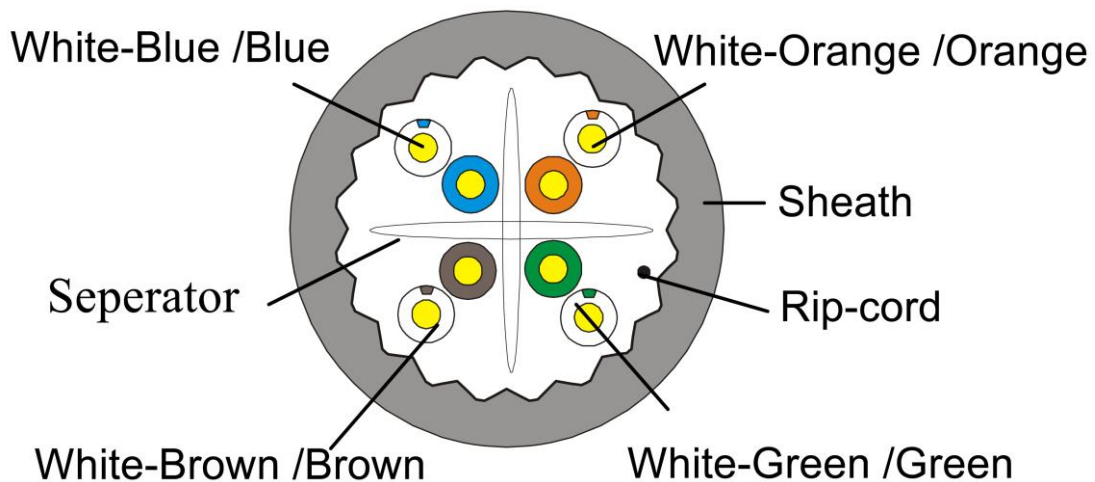
Cat.6A U/UTP Installation Cable



401496

The equip[®] Installation Cable is made of preeminent materials and thoroughly examined to meet or surpass industrial standards defined by the EIA / TIA, ISO and EN standard bodies. The performance is guaranteed via a comprehensive test including attenuation, return loss, NEXT (Next End Crosstalk) and FEXT (Far End Crosstalk) up to 500MHz and the hence the equip[®] Installation Cable serves well in the most demanding networking environments.

| Structure





www.equip-info.net

Specification

Conductor	Material	Bare Copper
	Construction	23AWG, 1/0.565 ± 0.015mm
Insulation	Material	HD-PE
	Diameter	1.02 ± 0.03mm
	Colors	Blue-White/Blue, Orange-White/Orange, Green-White/Green, Brown-White/Brown
Jacket	Material	LSZH
	Thickness	MIN at any point: 0.70mm / MAX AVG: 0.55mm
	Diameter	7.1 ± 0.4mm
	Colors	Gray
	Marking	equip CAT.6A U/UTP LSOH 4PR 23AWG INSTALL CABLE ISO/IEC 11801 & ANSI/TIA-568-C.2 VERIFIED EN50575:2014 Fire Class Eca

Electrical Properties

Electrical Characteristics (20°C)	Impedance(Ω)	1.0-250.0MHz	100 ± 15
		251.0-500.0MHz	100 ± 22
	1.0-500.0MHz Delay Shew (ns/100m)		≤45
	DC Resistance (Ω/100m) max		9.38
	DC Conductor Resistance Unbalance (%) max		5.0



www.equip-info.net

| Performance

Technical Performance (100m):

Frequency (MHz)	RL \geq dB	ATT \leq dB	NEXT \geq dB	DELAY \leq ns	Frequency (MHz)	PSNEXT \geq dB	ELFEXT \geq dB	PSELFEXT \geq dB
1	20.0	2.1	74.3	570.0	1	72.3	67.8	64.8
4.0	23.0	3.8	65.3	552.0	4	63.3	55.8	52.8
8.0	24.5	5.3	60.8	546.7	8	58.8	49.7	46.7
10.0	25.0	5.9	59.3	545.4	10	57.3	47.8	44.8
16.0	25.0	7.5	56.2	543.0	16	54.2	43.7	40.7
20.0	25.0	8.4	54.8	542.1	20	52.8	41.8	38.8
25.0	24.3	9.4	53.3	541.2	25	51.3	39.8	36.8
31.25	23.6	10.5	51.9	540.4	31.25	49.9	37.9	34.9
62.5	21.5	15.0	47.4	538.6	62.5	45.4	31.9	28.9
100	20.1	19.1	44.3	537.6	100	42.3	27.8	24.8
200	18.0	27.6	39.8	536.5	200	37.8	21.8	18.8
250	17.3	31.1	38.3	536.3	250	36.3	19.8	16.8
300	16.8	34.3	37.1	536.1	300	35.1	18.3	15.3
500	15.2	45.3	33.8	535.6	500	31.8	13.8	10.8

| Ordering Information

PN	EAN	Length	Packing
401496	4015867202098	305m	Equip EZ Box

| Typical Applications

- IEEE 802.3: 10Base-T; 100Base-T; 1000Base-T
- IEEE 802.5 16 MB; ISDN; TPDDI; ATM
- Class E ISO/IEC 11801 2nd Edition & EN 50173

