

eSATA PCI Card 1+1

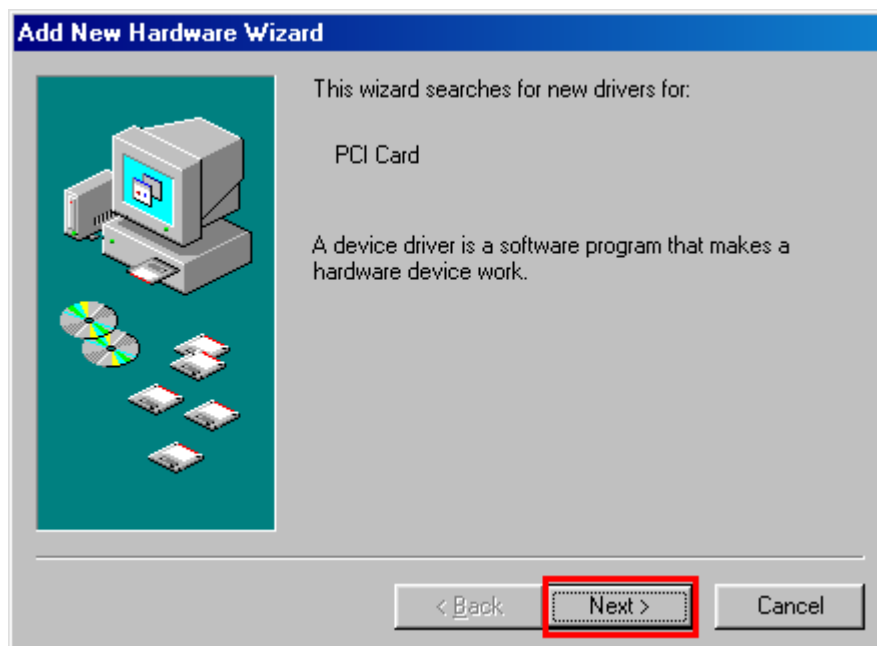
Driver Installation Guide



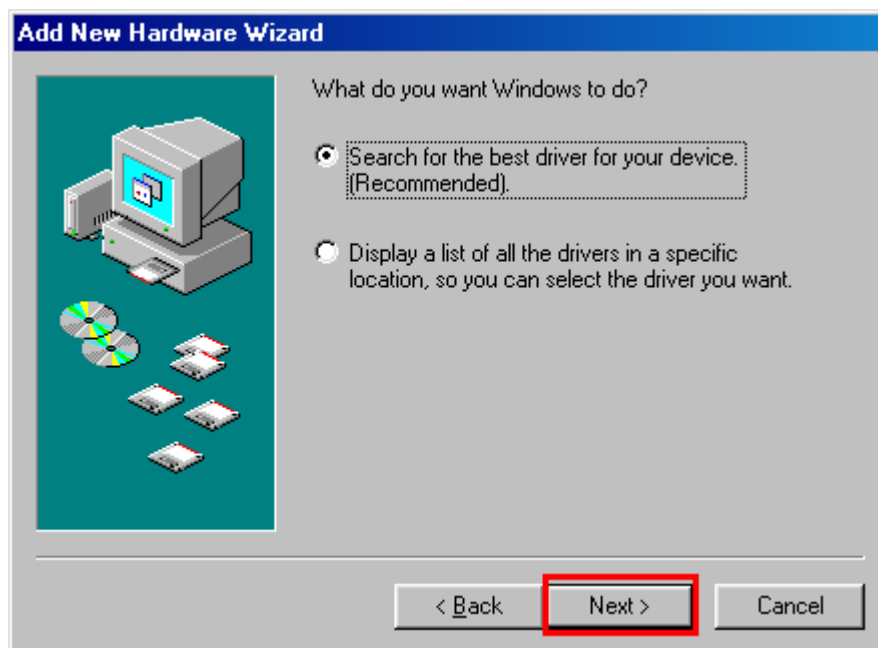
■ Driver Installation

a) Windows 98SE / ME example

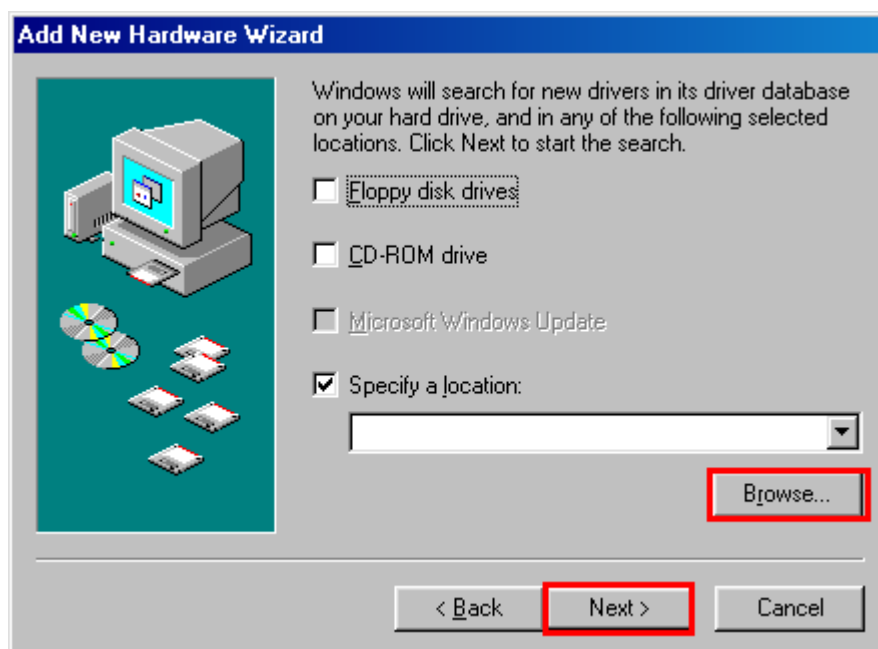
1. Following Wizard to add a new hardware



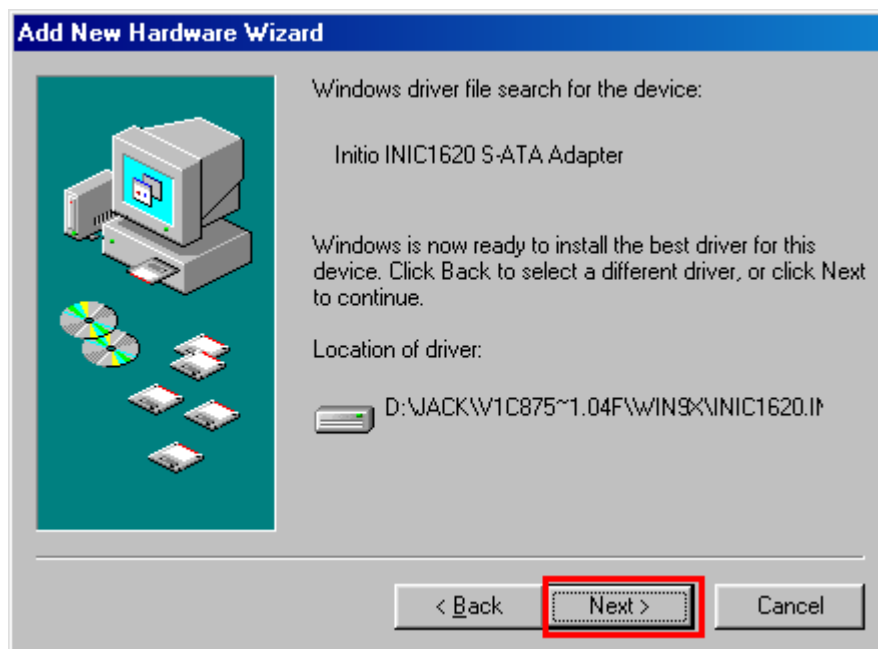
2. Select “**Search for the best driver for your device.**” and click the NEXT button.



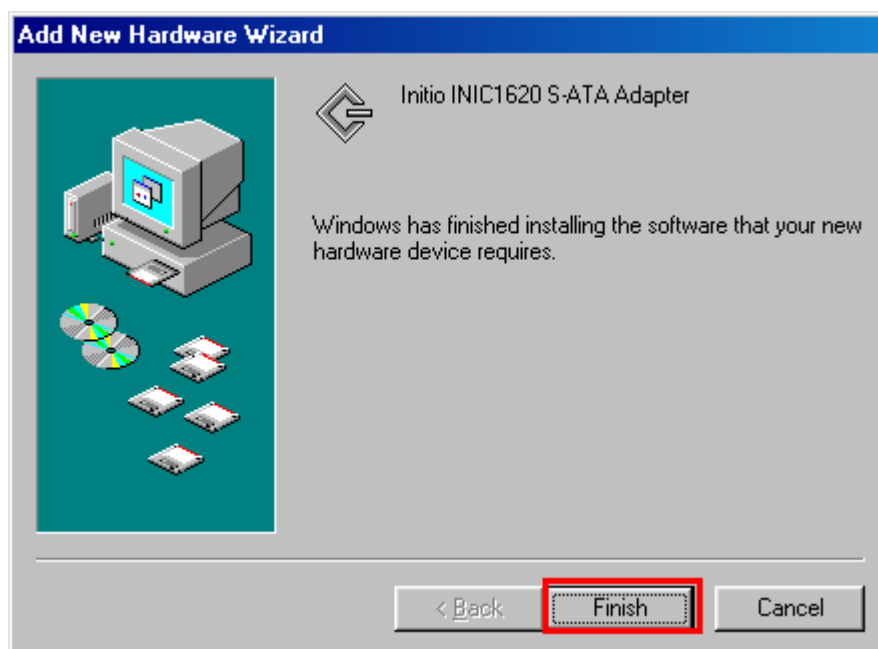
3. Choose the “specify a location” and use “**Browse**” button to assign the 1620 driver’s location.



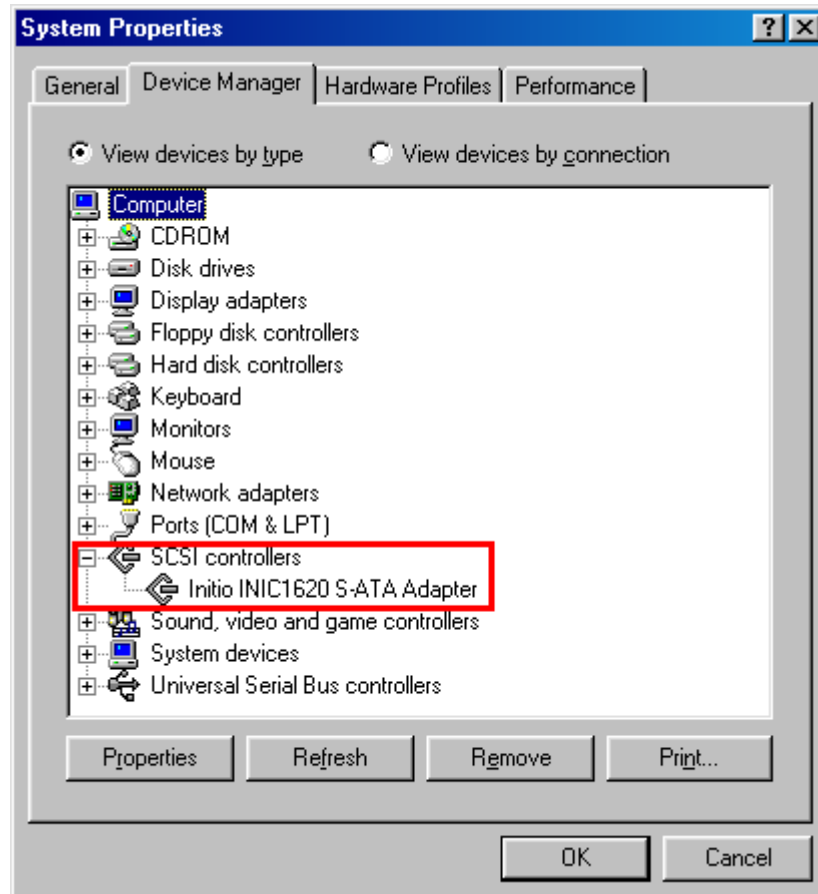
4. Click the “NEXT” button to install driver.



5. Click “Finish” button to finish the driver installation.

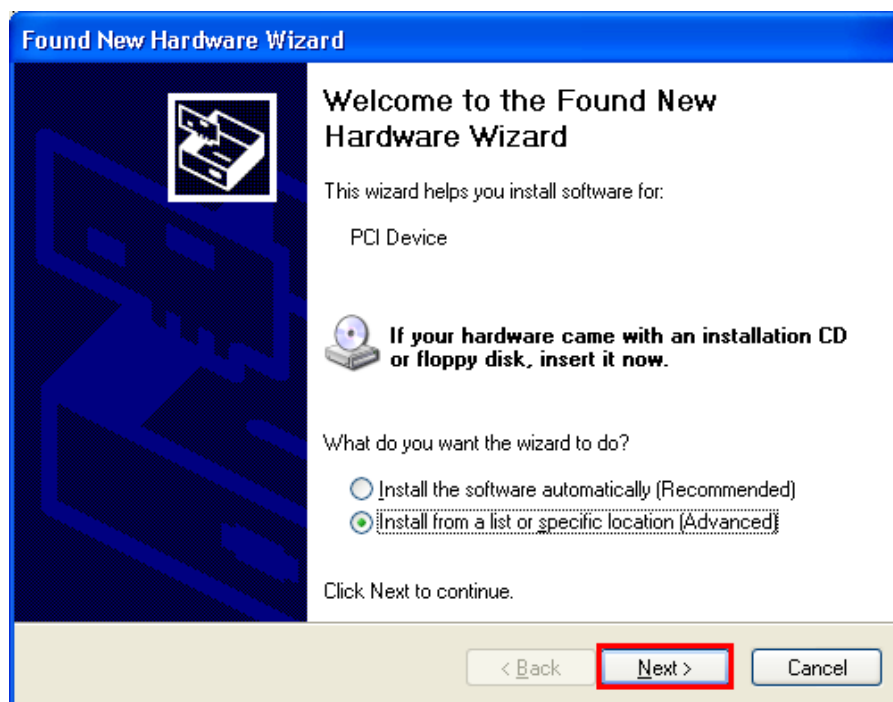


6. You can verify the driver is installed successfully in Device Manager.

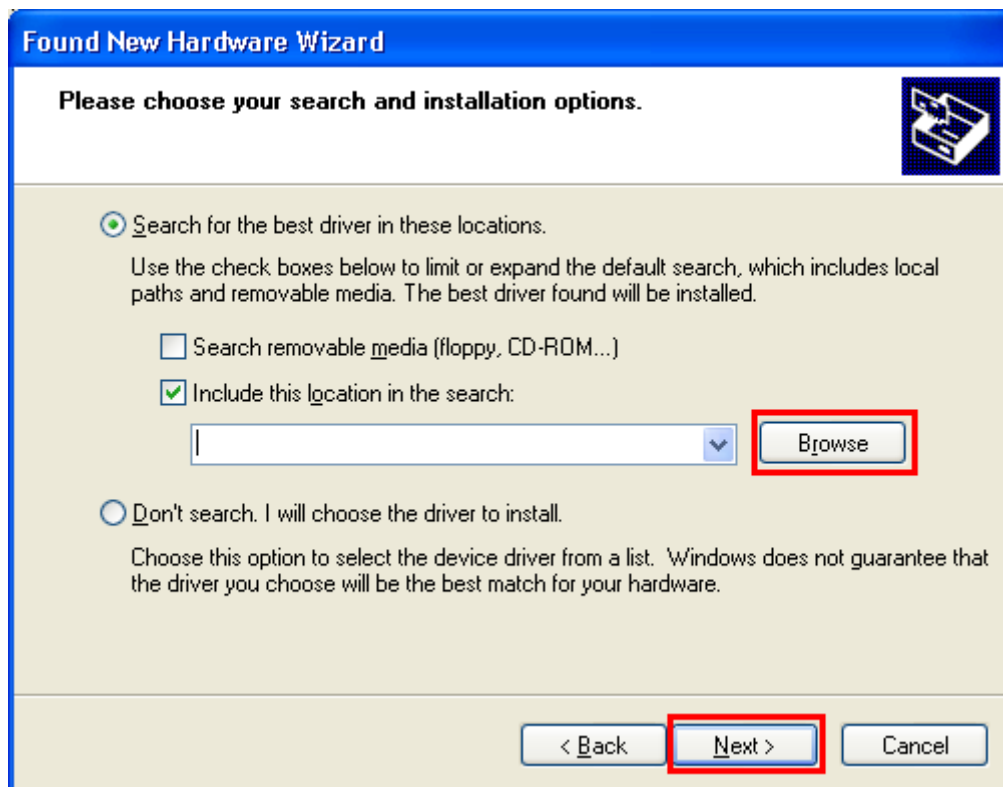


b) Windows 2000/XP/2003 example

1. Choose the item of "Install from a list or specific location" and click "NEXT" button to continue.



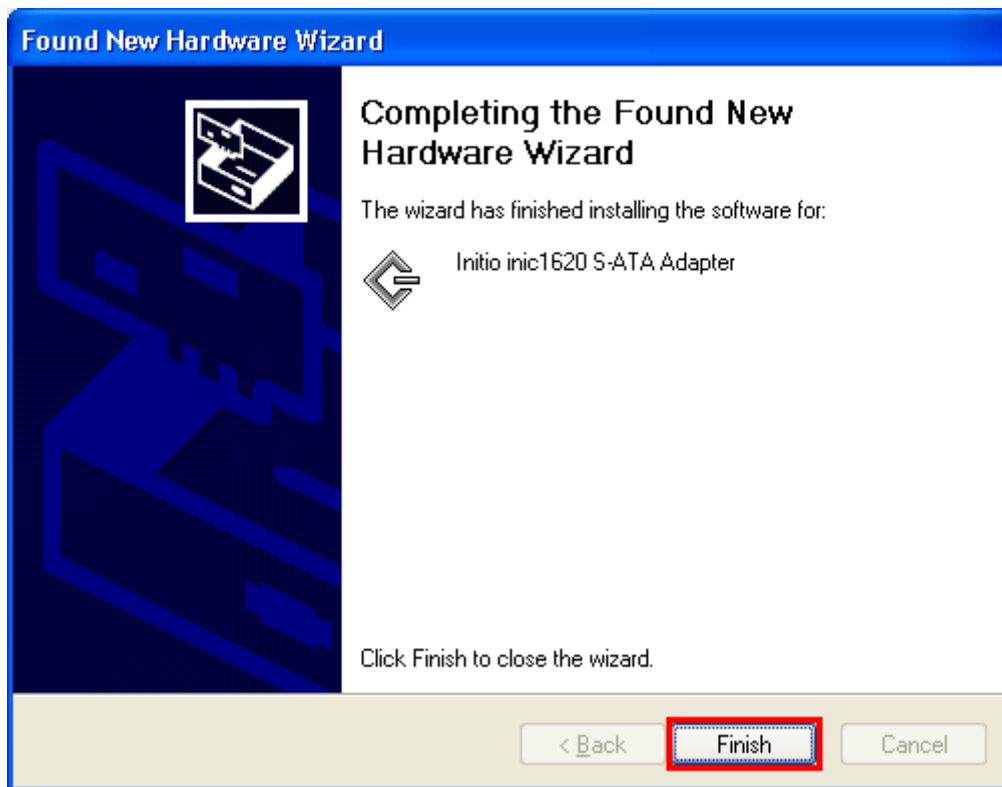
2. Select the "Include this location in the search" and assign the 1620 driver's location by "Browse" button.



3. Click "Continue Anyway" button to continue.



4. Click “Finish” to complete driver installation.



5. You can see “Initio Inic1620 S-ATA Adapter” list in “SCSI and RAID Controllers” on Device Manager that means the driver installation is successful.

